

# LIGNOPRO®

Wood coatings for industrial applications

LIGNOPRO® 851

## CLT-Varnish UV

Hydrophobic surface  
Optimal UV protection  
High-quality appearance

# Humidity? Not a chance!

Transportation is a critical aspect of handling large CLT elements.

The usual foil covering does not always provide full protection from humidity. And changing climatic conditions can lead to condensation beneath the foil. LIGNOPRO® CLT-Varnish UV provides a truly professional solution: Due to its extreme hydrophobia, humidity really can no longer damage your components. Foil packaging becomes superfluous, saving large volumes of waste and so preserving the environment.









# LIGNOPRO® CLT-Varnish UV

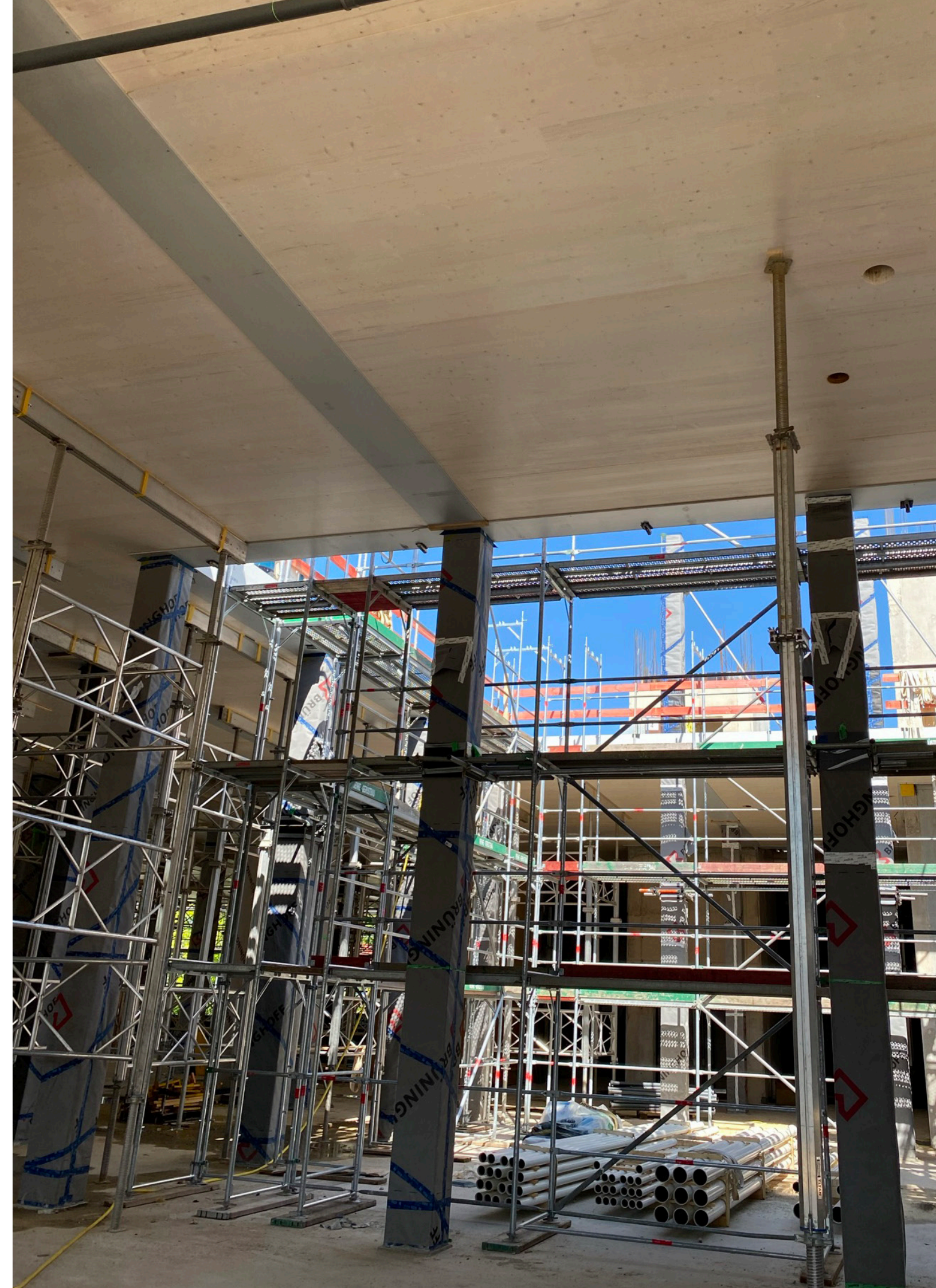
Ultimate protection at the construction site.

## Dirt? Wipe it off!

During the construction phase, the high-value components may become soiled. Removing this dirt always is always labour-intensive and therefore costly. LIGNOPRO® CLT-Varnish UV reliably protects your products and ensures that soiling can be easily removed.









LIGNOPRO® CLT-Varnish UV

The optimal product for high-quality visible timber.

# Appearance? Modern. Timeless.

With just one coat, LIGNOPRO® CLT-Varnish UV gives you a high-quality, noble-looking appearance whose effect highlights modern architecture. The surfaces are easy to clean and the triple UV protection durably prevents discolouration.









# LIGNOPRO® 851 CLT-Varnish UV



- › Optimal protection from humidity and soiling
- › Visible-grade with just one coat
- › Naturally matte appearance
- › Noble surface quality
- › Colourless or transparent pigmentation
- › Triple UV protection
- › For indoor and outdoor use

Just one coat!

## Applications

LIGNOPRO® 851 CLT-Varnish UV was developed for decorative purposes and to protect cross-laminated timber from UV rays, soiling and weathering.

## Properties

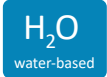
LIGNOPRO® 851 CLT-Varnish UV is a middle-layer varnish based on very fine pure acrylate. The product prevents the discolouration (darkening) of the wood induced by UV light. This is especially useful with very light white colours or natural and colourless variants indoors. Usable with all common glues. The coating material has a mild odour, forms a film, is block resistant and is easy to work. Its long standing time when opened enables achieving a uniform colour surface, including with large-format sanded cross-laminated timber components. The product forms a colourless or transparent, silky-matte film with a medium thickness which still reveals the grain of the wood. In the coloured variants, light-resistant pigments provide additional UV protection that prevents greying of the wood through lignin degradation. The varnish ensures humidity regulation by protecting the wood from penetrating water while keeping it open to diffusion. The surface quality achieved after just one coat protects the cross-laminated timber for the duration of the building's use from soiling, which can be easily wiped off without seeping into the wood. Depending on the desired surface, a further coating (with or without an intermediary coat) can be applied.

## Container sizes

20 l ; 1000 l

## Technical characteristics

Solvent	water-based
Bonding agent	pure acrylate
Coat appearance	matte, transparent
Application locations	indoors, outdoors
Protection from	humidity, soiling, UV light
Active substances	no biocides
Application	painting, spraying
Quantity needed	100-140 ml/m² per coat
Drying time (normal climate)	touch-dry after around 1 h, fully dry after around 4 h



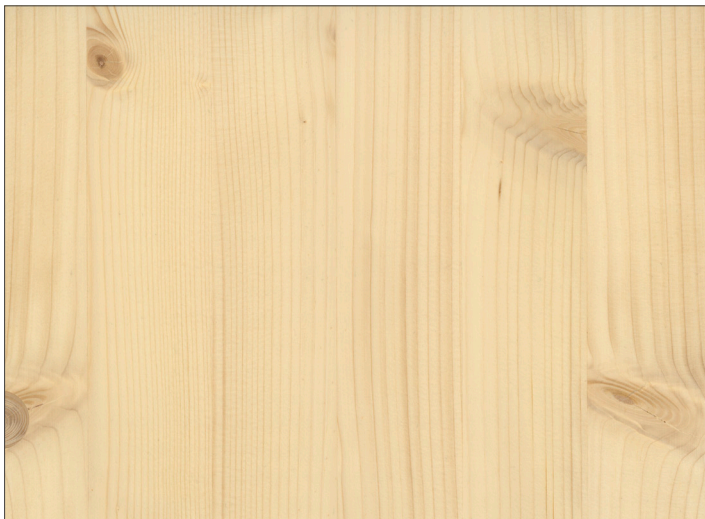




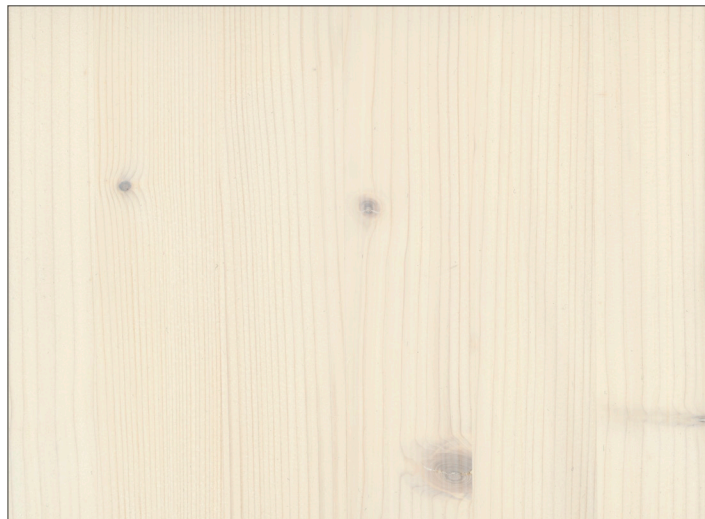


# LIGNOPRO® CLT-Varnish UV

## Standard colours



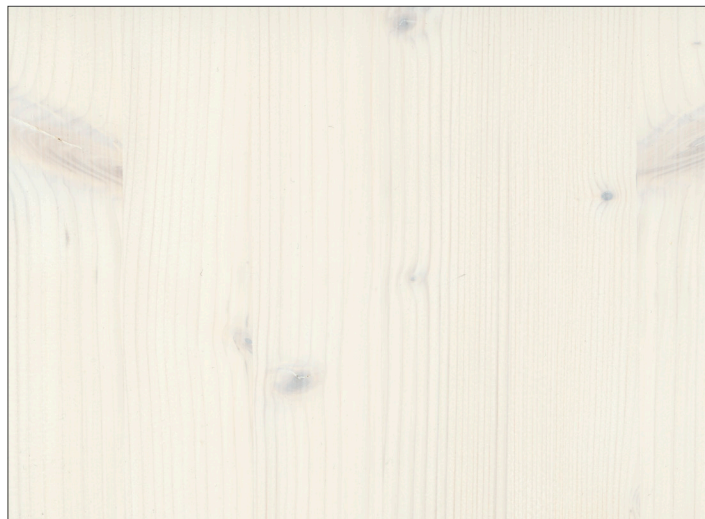
KS0000 colourless



KS0332-50 white



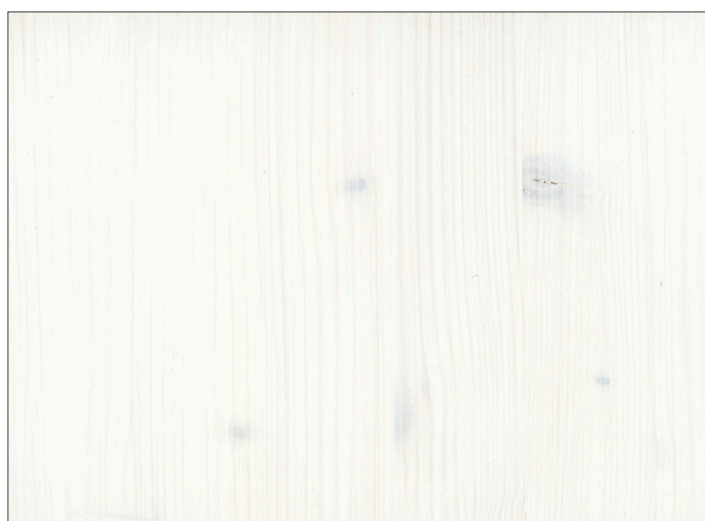
KS1000 natural



KS0332-100 white

### Used material:

- CLT, spruce
- LIGNOPRO® 851 CLT-Varnish UV
- 1 coat application with 120 ml/m<sup>2</sup>



KS0332-200 white

CLT-Varnish UV is available in several colours. The basic protective properties are identical for all colours, but a greater pigmentation additionally increases UV protection. KS0000 colourless brings out the grain of the wood, while KS1000 is mildly pigmented to achieve a natural look of the wood's surface. KS0332 50/100/200 are harmoniously assorted shades of white that fit in perfectly into modern architecture.



# Noble colours.

With just one coat, you obtain a noble, matte surface in various shades. The structure, and therefore the natural appearance, of the wood are durably maintained.



# LIGNO**PRO**® sets benchmarks in wood construction



## B**SH**-Varnish (for glued laminated timber)

With our BSH Varnish products, we have been sustainably revolutionising the market for glued laminated timber coatings since 2009. The coating of long glued-wood elements in wood construction poses a particular challenge. Together with leading companies in the glued laminated timber industry, we have developed products that offer optimal handling, outstanding protection and a sales-enhancing aesthetic. Nevertheless, we are able to offer this product at an excellent price/quality ratio.

## BauBuche-Varnish

Since 2015, we have also been pushing innovation in the use of BauBuche. The development and application of our BauBuche varnish products gives components the humidity protection that completes their otherwise exceptional technical properties. This opened up many new areas of application for BauBuche. Large-format, slim structural elements in BauBuche need a safe and reliable protection from humidity during transport and construction. We developed BauBuche Varnish during a three-year process in conjunction with the manufacturer and succeeded in surpassing all expectations regarding the protective properties of the product. The exclusive recommendation of the manufacturer to use BauBuche Varnish clearly shows that there is no alternative that comes close to our quality.

# Consistent development







# LIGNOPRO® CLT-Varnish UV: The sustainable solution

Satisfied customers, high added value, on-schedule work.

In 2021 we started offering CLT-Varnish UV. We mined all of our experience gained from the development of BSH Varnish and BauBuche Varnish in order to also set new benchmarks in the CLT industry. **With just one coat** you achieve several goals: It provides optimal protection from humidity and dirt during transport and construction, unrestricted visible-grade quality with a natural, matte appearance with a noble colourless or transparently pigmented surface, and a triple UV protection against greying due to lignin degradation. It can be used both indoors and outdoors, and due to its outstanding technical and aesthetic properties it renders many other work steps that used to be necessary to achieve a high-quality finish superfluous.

Between the delivery of the cross-laminated timber and the completion of the construction project, construction elements are generally subjected to weathering. UV rays, humidity and dirt can quickly damage the surface, especially aesthetically. Correcting this costs time, money and nerves. It is often difficult, and sometimes impossible, to restore the original appearance. Prevent this damage from even arising by applying a coating of CLT-Varnish UV. This will simultaneously add value as your products obtain a decorative upgrade.

## Everything you need for CLT.

### Easy-to-clean surfaces

The water-resistant, closed film of our CLT-Varnish UV coating enables the easy removal of dirt that has accumulated at the construction site and to restore the appearance desired by the owner and the architect.

### Minimise crack formation

Cross-laminated timber surfaces that have been protected with CLT-Varnish UV only absorb minute amounts of humidity. This prevents the swelling of the external wood layers and the subsequent formation of cracks when they dry.

### Active environmental protection

CLT-Varnish UV replaces problematic foil packaging.

### Mould is a thing of the past

Without humidity seeping in, no mould can form. Mould stains are largely prevented.


### UV protection

Through micronised pigments and special UV absorbers, our CLT-Varnish UV is able to achieve optimal UV protection and therefore to effectively prevent the darkening of the wood.

### Appealing design possibilities

In addition to the comprehensive protective functions, a coating with CLT-Varnish UV also gives you various design possibilities and so greatly increases the value of your visible surfaces.



A close-up photograph of two cross-laminated timber (CLT) panels. The top panel is coated with a clear, protective layer, and the bottom panel is untreated. Both panels are covered with numerous water droplets of varying sizes. The coated panel's surface is smooth, and the droplets are mostly spherical. The untreated panel's surface is more textured, and the droplets appear to be spreading or absorbed into the wood grain. The background is dark and out of focus.

CLT coated:  
Humidity and dirt run  
off and cannot seep in

CLT untreated:  
Humidity and dirt are absorbed



## From product to solution.

With LIGNOPRO® , Koch & Schulte have developed a product that offers individual coating solutions for typical applications of industrial users.

Based on our proven wood coating, LIGNOPRO® stands for formulations that are individually adapted to the application-specific requirements. Besides the outstanding primary wood protection properties, the products are also tailored for optimal machine-friendliness.

Whether you dip, flood, manually spray, industrially varnish or use a vacuum process for coating, with LIGNOPRO® by KOCH & SCHULTE you combine ideal protection for your wood with optimal work processes, achieving consistently high-quality production results.

Furthermore, we offer you the possibility of adapting our products individually to your specific conditions and so to optimise your processes.

We have already won over many known manufacturers with our innovative and tailored products

*Adding value to your wood!*