

LIGNOPRO®

Wood coatings for industrial applications

BSH-Varnish

High-performance
Safe to use
Economic

840
841
842
843

Image: Derix



LIGNOPRO® BSH-Varnish protects!

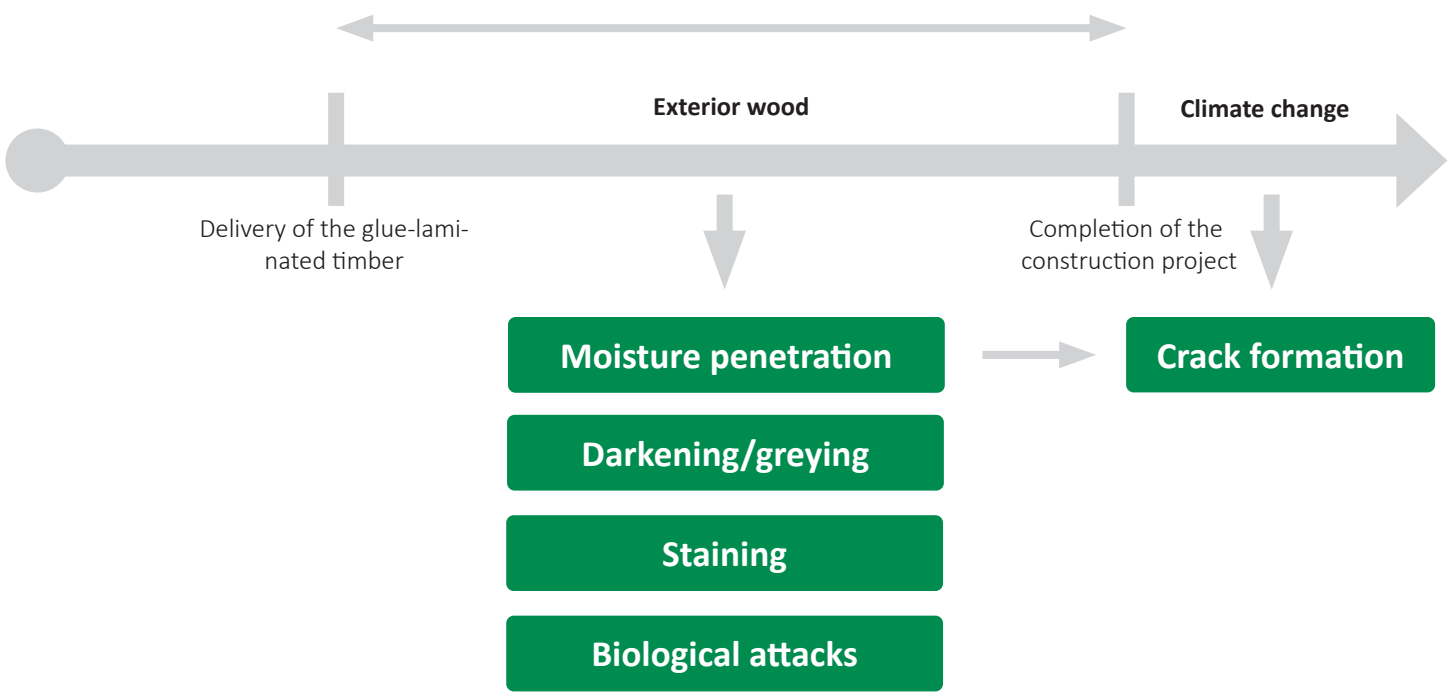
Convincing performance instead of a "pseudo glue-laminated timber protection"

Your glue-laminated timber will already be exposed to various influences during transport. Road dirt, gritting salt and soiled load-securing straps can cause significant damage to the surfaces. During construction, further possible contamination is caused by other components (cement dust, mortar, etc.) or the rolling oil of

corrugated metal sheets. Weathering damage, unclear weathering periods and darkening by UV radiation are other factors that can damage your products.

Temporary exposure phase

Dust / UV radiation / Moisture / Mechanical stress



LIGNOPRO® BSH-Varnish: Lasting solution

Satisfied customers, high added value, smooth acceptance dates.

Between the delivery of the glue-laminated timber and the completion of the construction project, it is usually unavoidable that building components are exposed to environmental influences. The surfaces can quickly suffer considerable, especially visual, damage due to UV radiation, moisture and dirt. Reworking is

time-consuming, costly and stressful. Restoring the original appearance is usually difficult, and often impossible. Prevent this damage with a high-performance coating of BSH-Varnish and simultaneously achieve added value with a decorative upgrade of your products.



The high-performance coating of BSH-Varnish provides strong moisture protection (precipitation/water vapour), protection against contamination, UV protection (no greying) and reduces the formation of cracks. It is safe to use, easy to apply, offers an optimal spread, dries quickly and is block resistant. There are also

many economic advantages: These are above all the consistent value retention of the glue-laminated timber and the efficient application. The good value for money and the possible increase in value of your products through the decorative finish complete the overall picture.

Easy-to-clean surfaces

The waterproof, closed film of our BSH-Varnish coating allows for dirt that has accumulated on the construction site to be very easily removed and to restore the look and feel of the glue-laminated timber desired by builders and architects.

Minimise the formation of cracks

Glue-laminated timber protected with BSH-Varnish absorbs only very small amounts of moisture. Swelling of the outer layers of wood is prevented, which minimises the later formation of cracks during drying.

Active environmental protection

BSH-Varnish renders burdensome film packaging unnecessary.

Mould is "a thing of the past"

Without penetrating moisture, no more mould grows. Mould stains are largely avoided.

UV protection

With micronised pigments or special UV absorbers, we achieve optimal UV protection and thereby reduce the darkening of the wood with BSH-Varnish.

Attractive finish possibilities

Beyond the extensive protective features, the coating of your glue-laminated timber with BSH-Varnish also offers the option of a decorative finish and thereby significantly increases the value of your products.



New construction X-LAM production hall, Derix LIGNOPRO® 840 BSH-Varnish RAL 3001



Production Facility Laudenbach, Derix LIGNOPRO® 841 BSH-Varnish UV



Production Facility Laudenbach, Derix LIGNOPRO® 841 BSH-Varnish UV

LIGNOPRO® BSH-Varnish variants

Tailored products for typical problems

BSH-Varnish was developed to protect glue-laminated timber and cross-laminated timber against contamination and weather influences and for a decorative finish. It is a water-dilutable, ultra-fine pure acrylic intermediate coating varnish and is compatible with all commercially available types of glue. The coating material is low-odour, film-forming, block resistant and is easy to apply. A long open time allows for smoothing out as a second work step. The product forms a colourless or transparent satin or matt film with a medium body, through which the grain of the wood remains visible. The coating film is highly weather-resistant and does not peel off. Micronised light-resist-

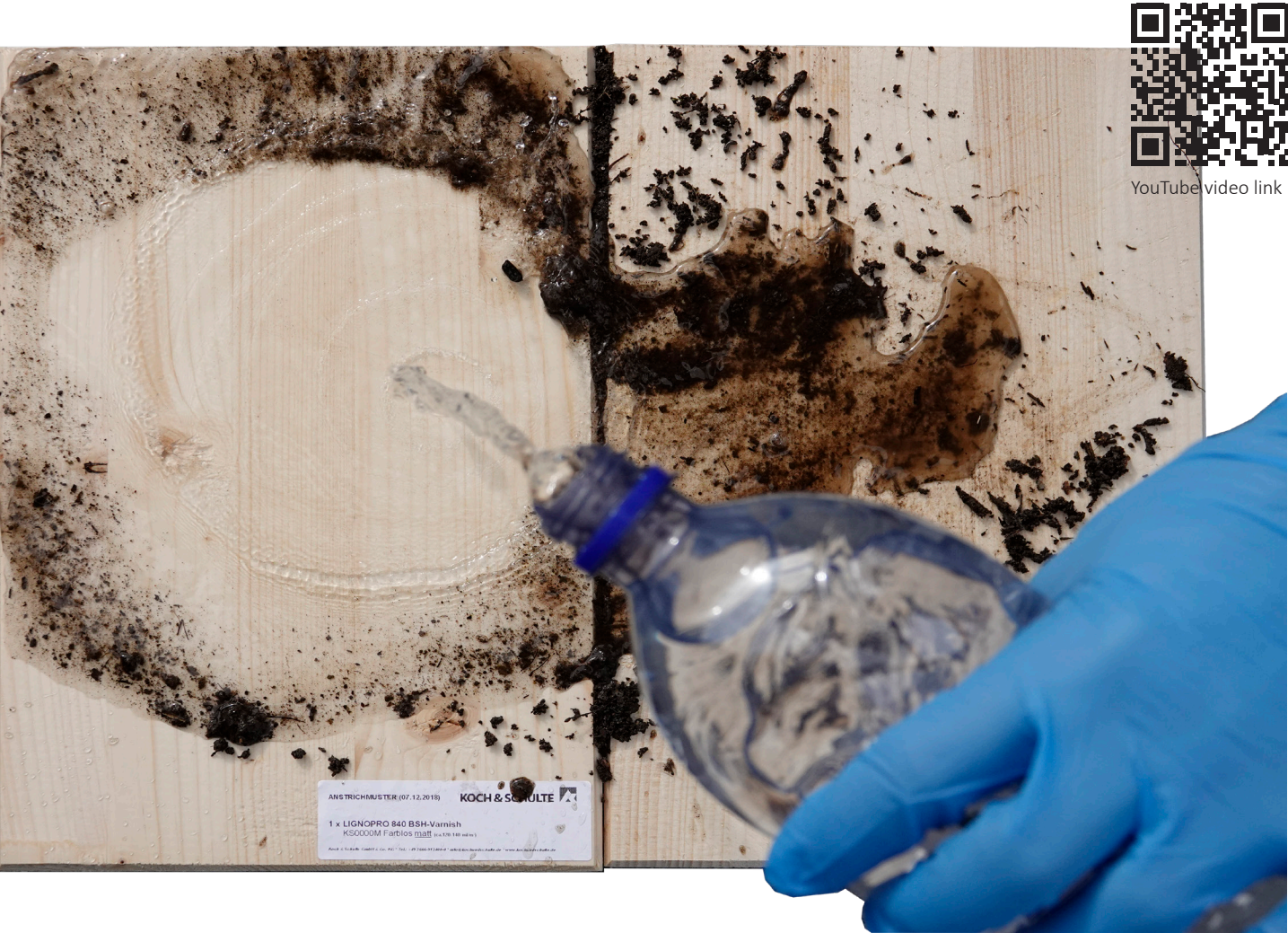
ant pigments provide UV protection and thus prevent greying of the wood due to lignin decomposition. UV protection is only provided with sufficient pigmentation. LIGNOPRO® 841 reduces darkening even without pigment. The varnish provides moisture regulation by protecting the wood from water penetration while simultaneously leaving it open to diffusion. Extreme water-repellency is optionally available (LIGNOPRO® 842). In LIGNOPRO® 843, the extreme water-repellency and the UV protection are combined.

Product	LIGNOPRO® 840 BSH-Varnish	LIGNOPRO® 841 BSH-Varnish UV	LIGNOPRO® 842 BSH-Varnish HydroX	LIGNOPRO® 843 BSH-Varnish HydroX UV
Description	Biocide-free, acrylate-based special coatings with a high solids content for a water-repellent and dirt-repellent BSH surface. Leaves the wood open to diffusion.			
Water repellency	★★★★★	★★★★★	★★★★★	★★★★★
UV protection	★★★★★	★★★★★	★★★★★	★★★★★
Surface	Satin/matt			
Consumption/coverage	Approx. 100-140 ml/m²			
Container sizes	20 l/1000 l			
Colour shades	KS0000, KS1000 natural, standard colour tones			
Paintable	Yes		After mechanical treatment	

LIGNOPRO® BSH-Varnish effect

Have you ever attempted to clean a soiled BSH truss?

Untreated or inferiorly coated wood surfaces are very susceptible to dirt and UV. Attempts to restore the original surface often end with a patchy result. The time required is immense but the result mostly remains unsatisfactory. Builders and architects are generally unimpressed.

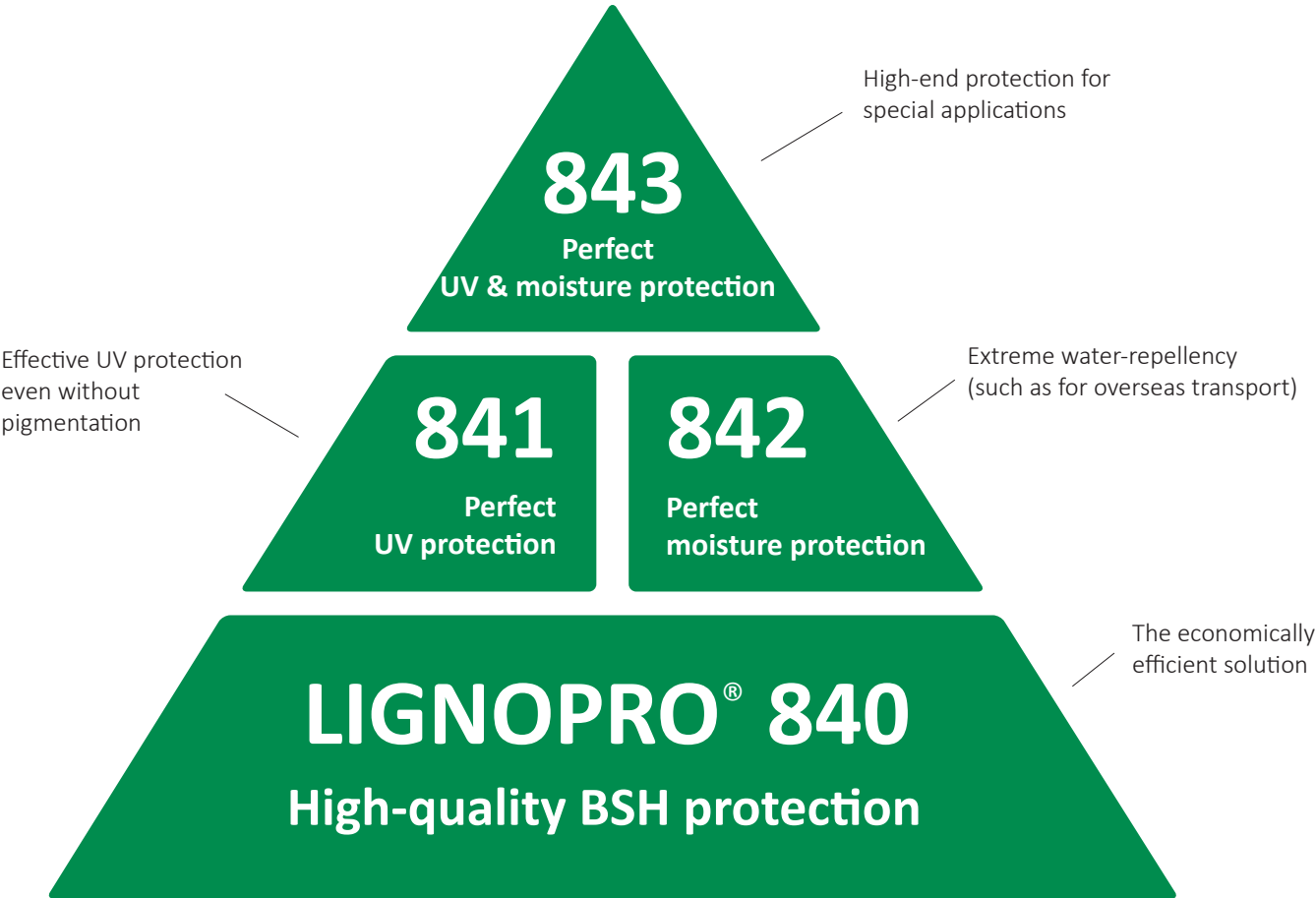


BSH-Varnish ensures planning security

Products protected with BSH-Varnish also look the way you want them to when they are approved by the planner. Even when they are delays to construction and the weathering phase lasts a few days longer. There are no discussions and no time-consuming reworking that could mess up your schedule.

BSH-Varnish certifications

- Declaration of No Objection: ISEGA Reg.-No.: 37208 U 14
Can be used safely for coating storage areas for animal feed and foods
- Tested according to EN 71-3 ("Safety of toys") and 53160 ("resistance to saliva and sweat")
- Environmental Product Declaration according to ISO 14025 and EN 15804 Declaration number: EPD-FEI-KUS-20160084-IBG1-EN
- eco-bau Reg.No: 201701.1101
- Very suitable for MINERGIE-ECO
- Complies with 1st priority ECO-BKP



Genau. Richtig.



Registration code: WFAN5D



Seilbahn Weissenstein: neue Holzbau AG, Lungern



Neubau Bürogebäude Immer AG-> neue Holzbau AG
Lungern & Immer AG, Uetendorf



Neubau Bürogebäude Immer AG-> neue Holzbau AG
Lungern & Immer AG, Uetendorf



Villingen-Schwenningen Ice Rink, Holzbau Amann GmbH



Rulantica, Europapark in Rust, Holzbau Amann GmbH

LIGNOPRO® BSH-Varnish colours

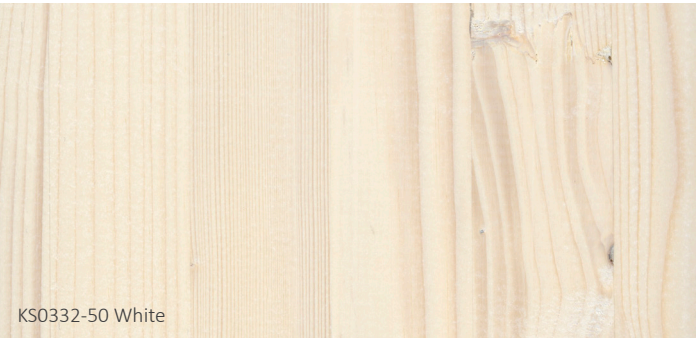
High-quality surfaces - economic added value



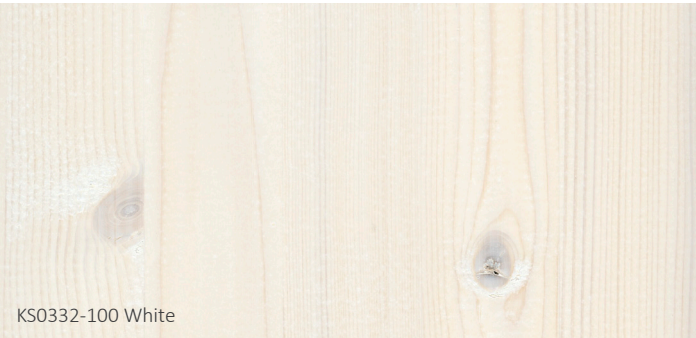
KS0000 Colourless



KS1000 Natural



KS0332-50 White



KS0332-100 White



KS0332-200 White



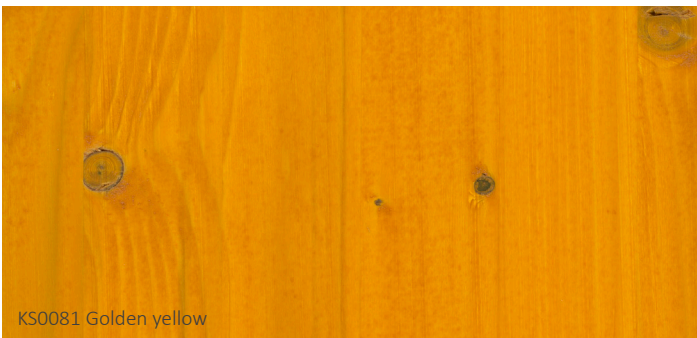
KS0274 Silver grey



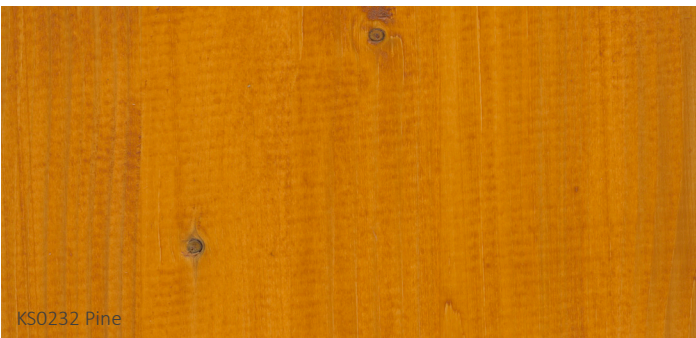
KS2360 Douglas fir



KS0131 Stone pine



KS0081 Golden yellow



KS0232 Pine

BSH-Varnish is available in standard colours, but can also be manufactured in individual colours according to customer requirements. As standard, BSH-Varnish has a satin finish but is also available in a matt variant.



More than 30 years of experience

The supplier in the BSH industry

We have fundamentally changed the market for BSH coatings with our BSH-Varnish products. The coating of long glue-laminated timber in timber engineering is a particular challenge. Together with leading companies in the glue-laminated timber sector, we have developed products that offer optimal processing, excellent protection and a sales-boosting appearance. We are nonetheless able to offer these products at excellent value for money. We will gladly also formulate coatings for you with properties according to your specifications or we will adapt existing recipes for you.

A high-quality BSH coating must offer a sufficiently high solids content to fulfil your functions. Additional options such as water-repellency, UV protection or film protection enhance the degree of protection and cover particularly challenging application scenarios.

A good "glue-laminated timber protection" significantly increases the value of the building component. On the one hand, by effectively preventing staining and cracks caused by swelling and shrinking movements. On the other hand, the truss undergoes a significant visual upgrade. The colour finish of the truss can support the architectural concept of the building and the factory coating saves the builder considerable costs.

Our application technology department will be happy to record your operational conditions and requirements on site and recommend the appropriate tools and application methods. This will allow you to save costs through optimal setting of the order quantities and short processing times.

The container sizes are available for every need. The handy 20 litre container for smaller order quantities and custom colours, the IBC (1000 l) with a discharge valve for industrial use. We are happy to provide our delivery service for subsequent delivery to the end customer for repainting work or extensions.

YOUR BENEFITS

- Environmentally safe formulations in premium quality
- Tried and tested products or individual formulations according to your requirements
- Standardised customisations (film protection, viscosity, HydroX, etc.)
- Competent technical advice
- Individually definable custom colours
- Sprayable qualities
- Short-term express delivery service
- Container sizes for every need, 20 l containers up to IBC (1000 l)

The same colour and identical quality ensure the long-term value of your product and the good reputation of your company through the willingness to provide service to the building owner or developer.

HydroX

HydroX technology is optionally available with the products BSH-Finish and BSH-Varnish. The film is made to be extremely water-repellent so that additional moisture protection is guaranteed. In addition to the visible water beading effect, there is a long-term protective effect (water resistance) that significantly reduces the swelling and shrinking behaviour of the wood.



KOCH & SCHULTE



Holzschutzmittel | Holzveredelungsprodukte

From product to solution.

With LIGNOPRO®, Koch & Schulte has developed a product range that offers individual coating solutions for typical application scenarios of industrial users.

Based on our proven wood coatings, LIGNOPRO® stands for formulations that are individually adapted to application-specific requirements. Alongside the excellent primary wood protection properties, the products are also tailored to optimal machinability.

Whether you are dipping, flooding, spraying manually, painting industrially or vacuum coating - with LIGNOPRO® by KOCH & SCHULTE, you combine the best possible wood protection with optimal manufacturing processes, for consistently high-quality production results.

We also offer you the option of adapting our products individually to your specific circumstances and thereby optimising your processes.

We have already convinced many well-known manufacturers with our innovative and customised products

Adding value to your wood!

KOCH & SCHULTE GMBH & CO. KG
Industriegebiet Seenplatte
Steinebacher Ring 2
57629 Linden / Westerwald

Tel.: +49 (0)2666-91240-00
Fax: +49 (0)2666-91240-09
info@kochundschulte.de
www.kochundschulte.de